

# TECHNICAL SHEET

## SPIRAL MIXER KG.40



**models**  
**SP40/18 – SP401T/18 – SP402T/18**

# TECHNICAL SHEET

## SPIRAL MIXERS SP40

- Dough capacity of Kg.40
- Inox fixed bowl of liters 48 – Bowl dimensions cm.45x30 (inside)
- Mechanical transmission with gears in grease bath
- Machines on wheels (in series !)
- Minimum granted doughs till 10% on bowl capacity
- Spiral tool of big dimension for very quick dough times
- Spiral tool, bowl, tool shaft, bowl guard in stainless steel
- Accessories on request : structure-carpentry in stainless steel / Extra basement cm.18 height

**REDUCER WITH GEARS**

**SPIRAL TOOL AND MANDREL**

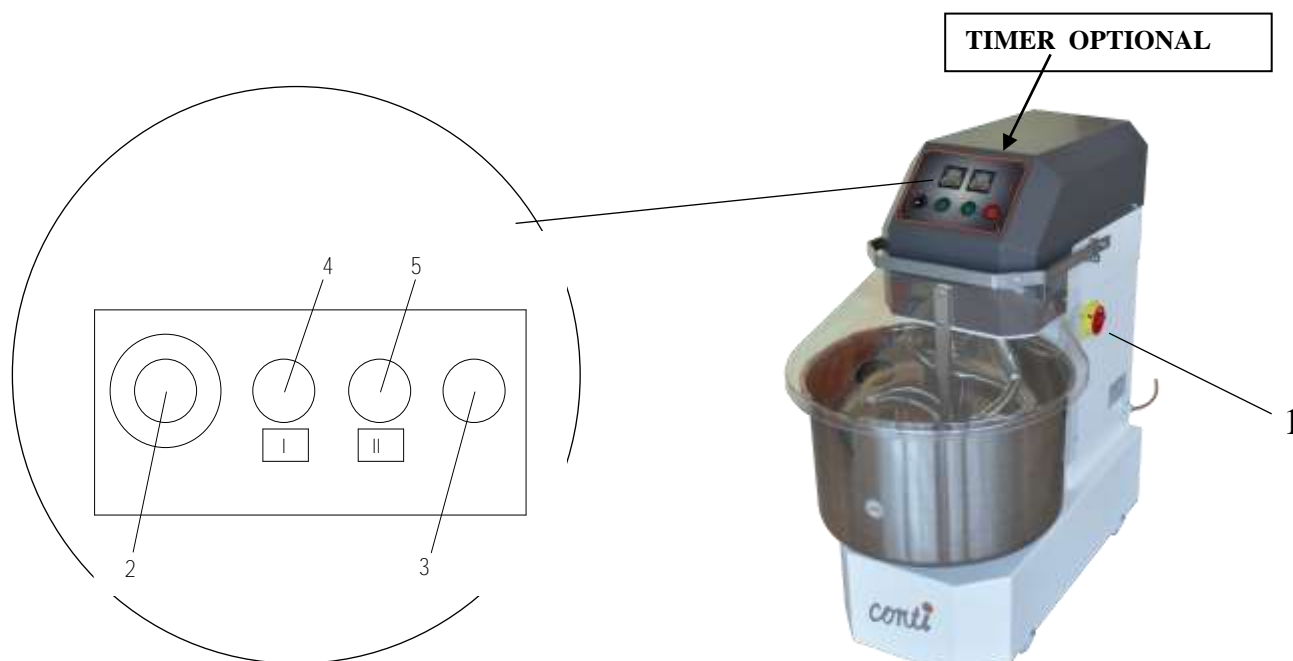

|                | <b>SP 40</b> |
|----------------|--------------|
| <b>weight:</b> | Kg 140       |
| <b>Volt:</b>   | 400          |
| <b>HZ:</b>     | 50 - 60      |
| <b>Phase:</b>  | 3            |
| <b>Ampere:</b> | 5,6          |
| <b>Kw:</b>     | 1,5 / 2,2    |
|                |              |

## ***1.2 TECHNICAL FEATURES***

|  |            |
|--|------------|
| Height : .....                               | Mm 1000    |
| Width SP40: .....                            | Mm 520     |
| Depth SP40 : .....                           | Mm 900     |
| 1° speed of tool : .....                     | Rpm 73     |
| 2° speed of tool : .....                     | Rpm 113    |
| 1° speed of bowl : .....                     | Rpm 9      |
| 2° speed of bowl : .....                     | Rpm 14     |
| Min / Max Flour quantity SP40.....           | Kg. 3 / 20 |
| Min / Max Finished dough quantity SP40 ..... | Kg. 4 / 40 |

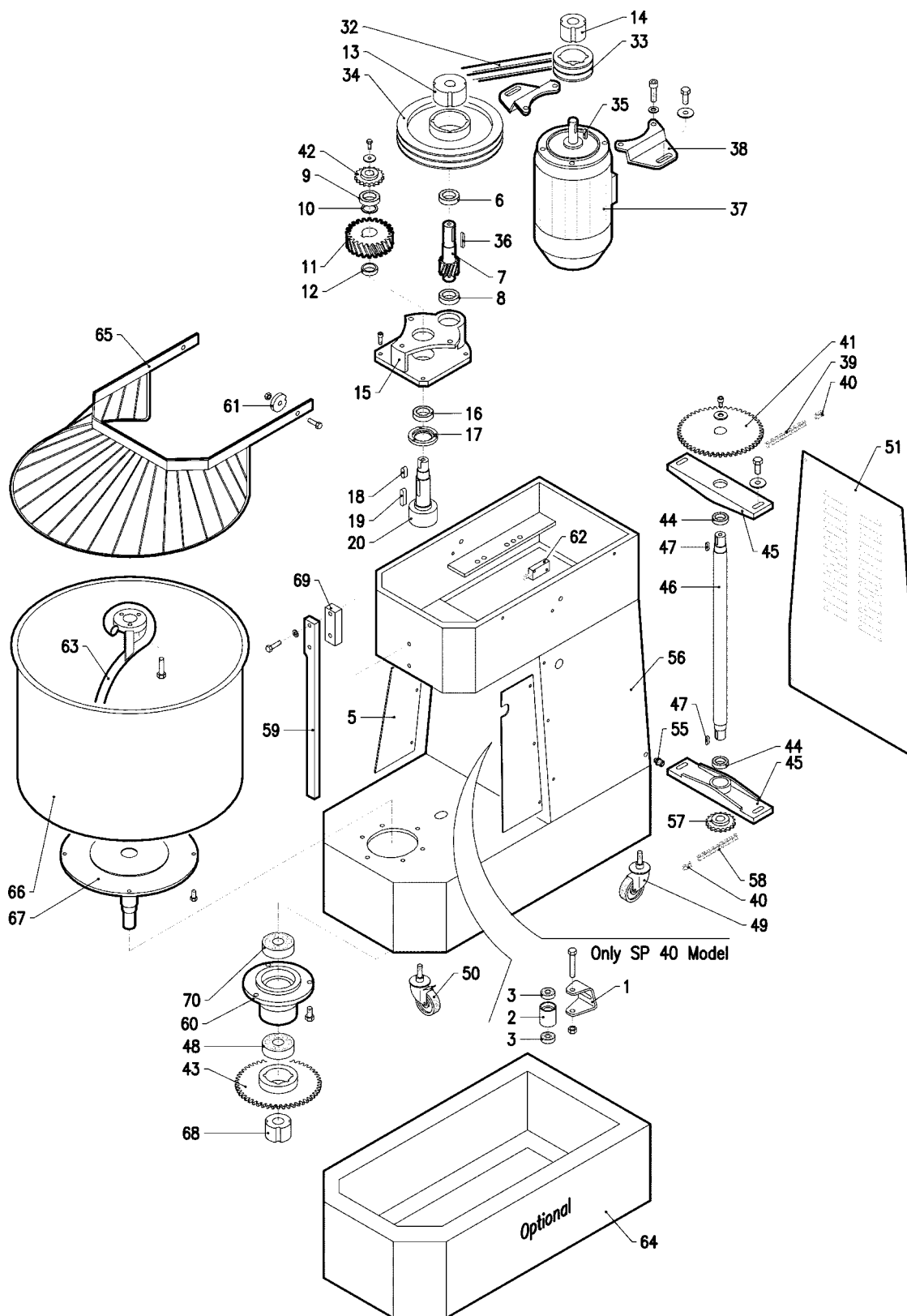
Machine has emission of the sound inferior of 70 dB.

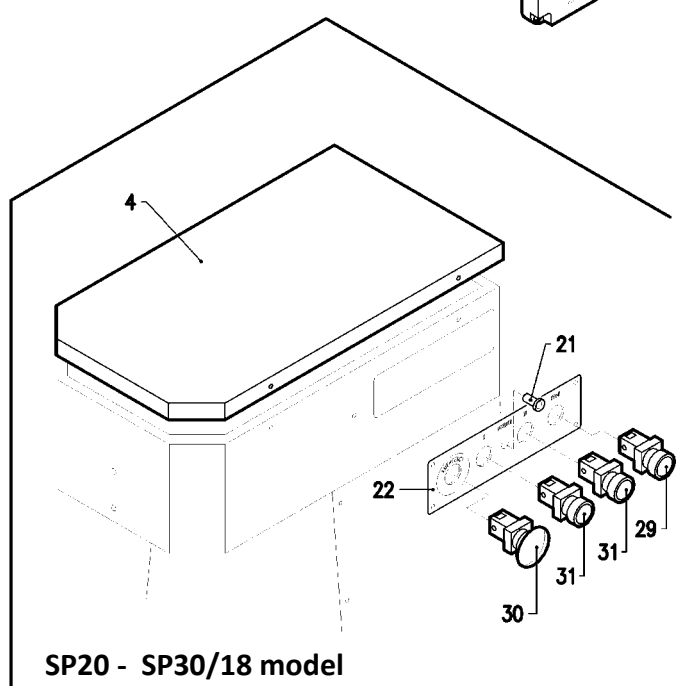
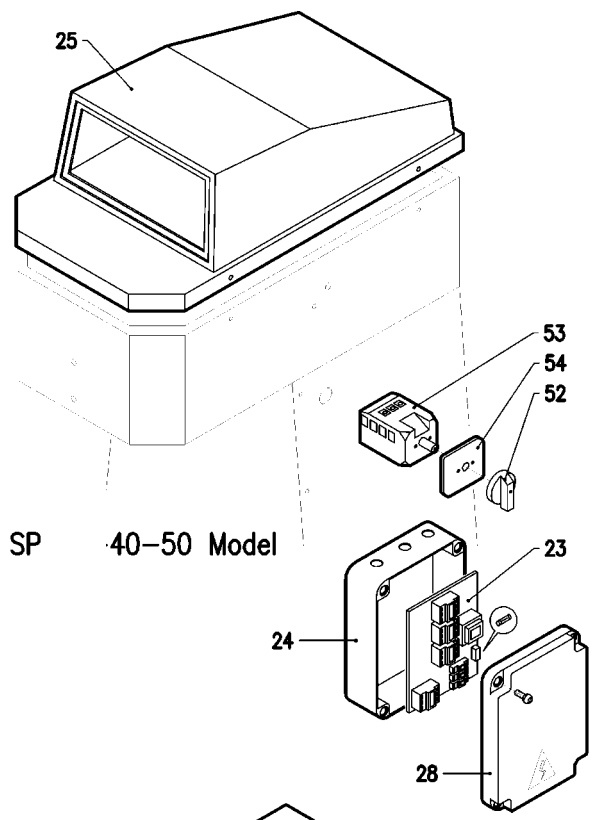
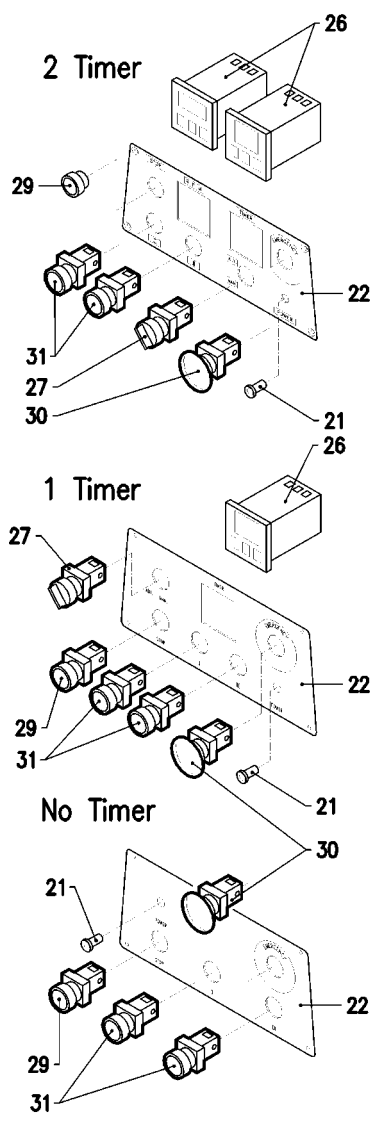
## 2.6 DESCRIPTION of CONTROL PANEL



| N° | Description   | Comands     | Colors         |
|----|---|-------------|----------------|
| 1  | Switch off the current  | Main switch | /              |
| 2  | Stop emergency  | button      | Yellow and red |
| 3  | Stop the work of machine  | Button      | Red            |
| 4  | Start first speed   | Button      | Black          |
| 5  | Start second speed  | Button      | Black          |
| 6  | Digital timer ( ON REQUEST)<br>Semi-automatic with 1 timer<br>Automatic with 2 timers | Timer lcd   | gray           |

## 7.7 DRAWING of MACHINE







**Model SP40/18**



