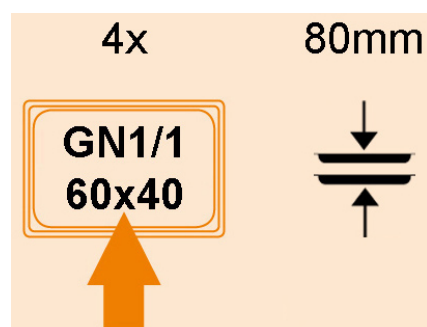


SL004-DAE

SIMPLE LOTUS OVENS

OVENS "SIMPLE" ELECTRIC

Convection oven with 10 levels steam regulation, analogic/electro-mechanic control panel. Max temperature 260°C. Timer. 2 speeds fan. Chimney open. LED lighting. Left door. Capacity 4xcm.60x40, 4xGN1/1.



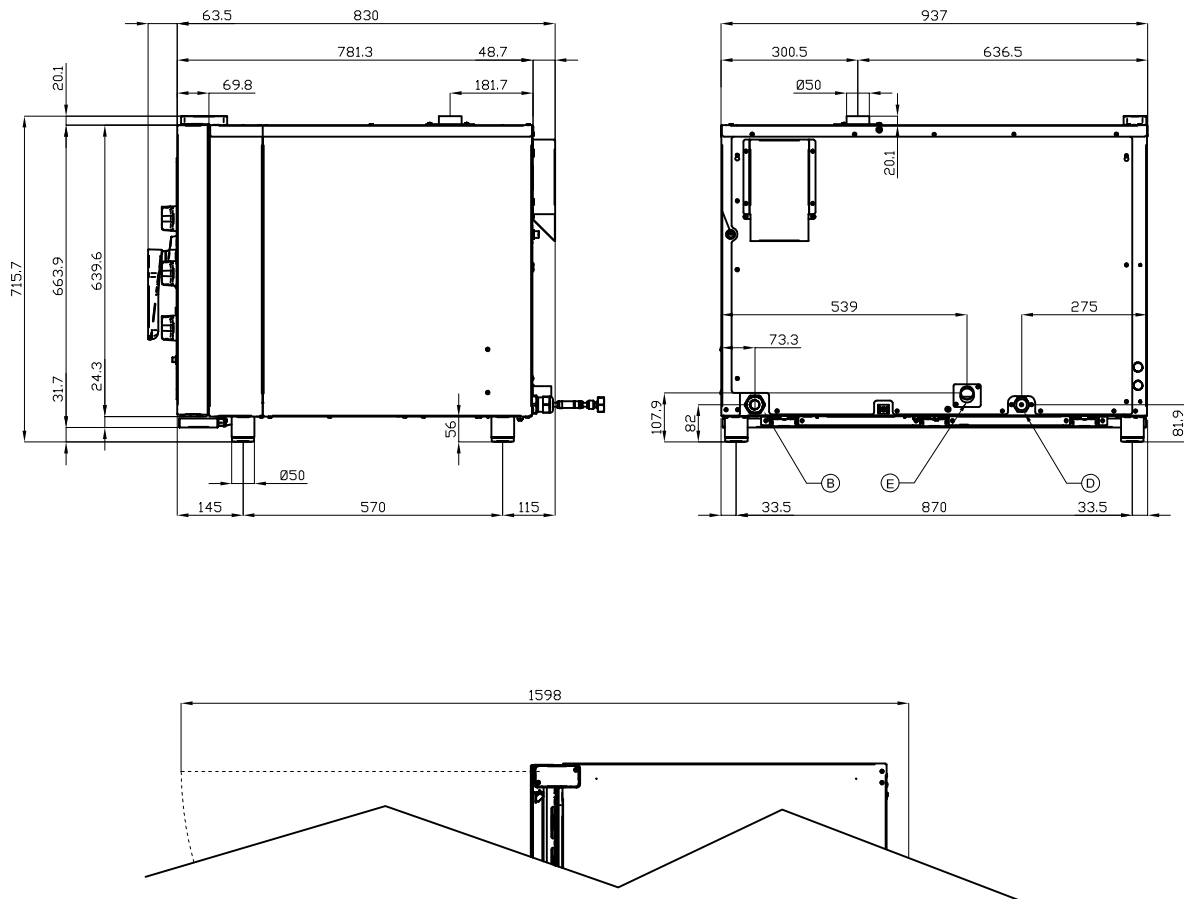
ITALIAN CULINARY ART

The pictures are purely representative. The manufacturer reserves the right to modify the technical data and models without previous notice.

SL004-DAE

SIMPLE LOTUS OVENS

OVENS "SIMPLE" ELECTRIC



A	Data plate		B	Electrical connection	
D	Cold water connection	ISO 7-1 3/4" M	E	Water drainage	Ø30mm

MODEL: SL004-DAE
 DIMENSIONS: cm. 94x 83x 72h
 ELECTRIC POWER: 10,5 kW
 VOLTAGE: 400V~3N / 230V~3
 FREQUENCY: 50 Hz



kg: 102
 m³: 0.861
 mm: 1020x970x870

BUY LOTUS BUY ITALY

The pictures are purely representative. The manufacturer reserves the right to modify the technical data and models without previous notice.



LOTUS S.P.A. Via Calmaor, 46
 31020 San Vendemiano(TV) - Italy
 Tel. + 39 0438 778020 / 778468
 Fax + 39 0438 778277
 www.lotuscookers.it - lotus@lotuscookers.it