

PCC-94ETT

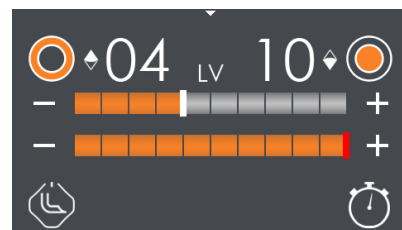
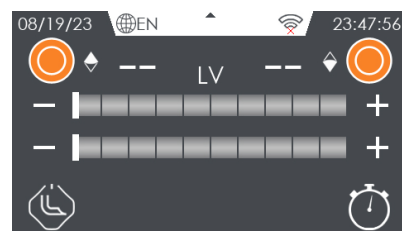
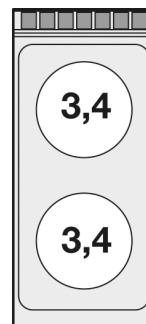
90 IPERLOTUS TOUCH ELECTRIC BOILING UNIT - TOUCH



Ceramic glass boiling unit on open cabinet,
Touch Screen 4,3" with 10 power levels.
"Energy Saving, WiFi and CLOUD". Functions:
2 timerr. n. 2 zones - glass cm.35x77
(included 1 Head end filler strip mod.TPA-9)



Construction -Fabricated using only CrNi 18/10 AISI 304 grade Stainless Steel Scotch-Brite Satin polish Finish, incorporating 2mm thick worktop, rounded edges, chromed details and rear splash back. Knobs with waterproof grades IPX5 and 4.3" capacitive touch screen. Model - Professional Ceramic Glass Boiling Unit on open cabinet. Ceramic glass tops with radiant heat hot plates and warning lights for residual heat. Single display for 2 cooking zones with power adjustment from 0 to 10 levels, 2 timers maximum 99 minutes, selection of central or external radiant heating elements or both. Standard WiFi and CLOUD, designed for connection to an external "ENERGY SAVING" system. Maintenance - All serviceable parts are accessible by the easy removal of front dashboard. Fittings - Appliance is supplied with adjustable feet. Doors not included.



ITALIAN CULINARY ART

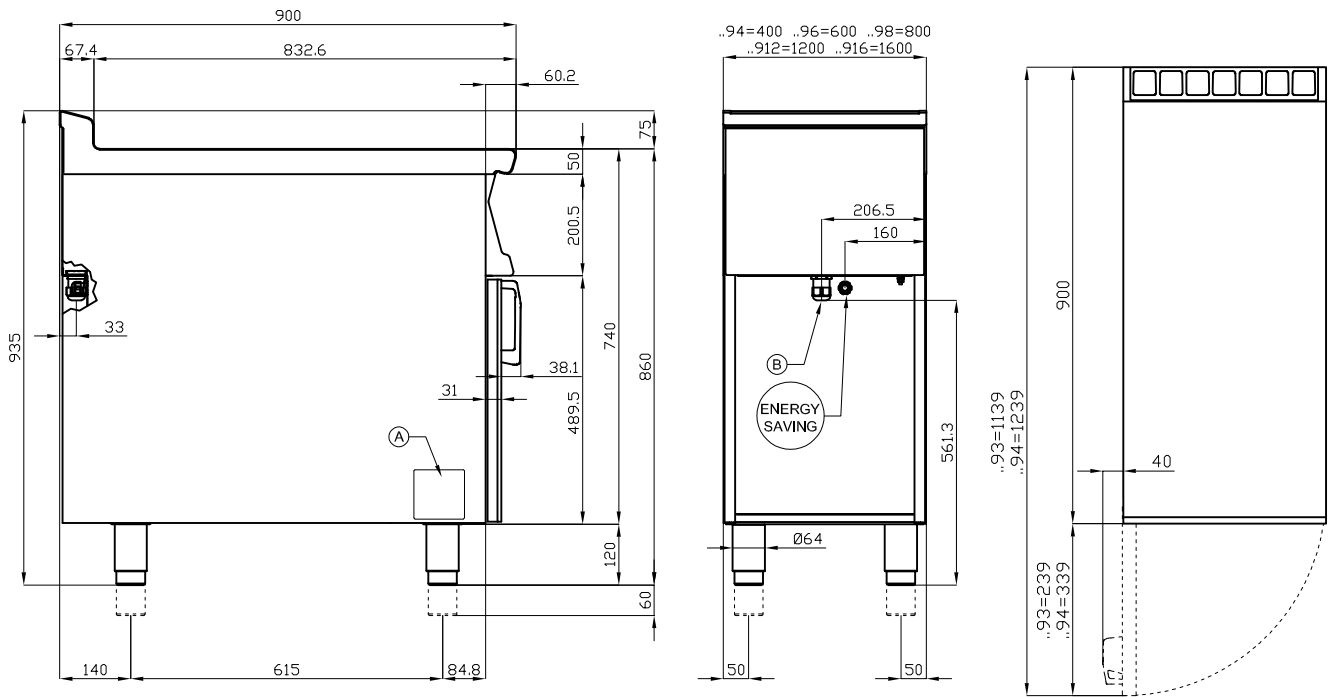
The pictures are purely representative. The manufacturer reserves the right to modify the technical data and models without previous notice.

PCC-94ETT

90 IPERLOTUS TOUCH
ELECTRIC BOILING UNIT - TOUCH



View 3D



A	Data plate		B	Electrical connection	
---	------------	--	---	-----------------------	--

MODEL: PCC-94ETT
DIMENSIONS: cm. 40x 90x 90h
ELECTRIC POWER: 6,8 kW
VOLTAGE: 400V~3N / 230V~3 / 230V~
FREQUENCY: 50/60 Hz



kg: 48
m³: 0.463
mm: 430x970x1110

BUY LOTUS BUY ITALY

The pictures are purely representative. The manufacturer reserves the right to modify the technical data and models without previous notice.



LOTUS S.P.A. Via Calmaor, 46
31020 San Vendemiano(TV) - Italy
Tel. + 39 0438 778020 / 778468
Fax + 39 0438 778277
www.lotuscookers.it - lotus@lotuscookers.it