

# MFV-78ET

## 70 SUPERLOTUS TOP STAND WITH ELECTRIC OVEN

Stand with electric fan oven cm. 55x36x34h,  
temp: 50÷300°C, with 1 grid cm.53x32,5  
GN1/1 (no induction top)



Construction - Fabricated using CrNi 18/10 AISI 304 grade Stainless Steel Scotch-Brite Satin polish Finish, rounded edges and chromed details. Knobs with waterproof grades IPX5. Model - Professional Stand with Electric Ventilated GN 1/1 or static GN 2/1 Oven. Fittings - Appliance is supplied with adjustable feet. Lid not included.

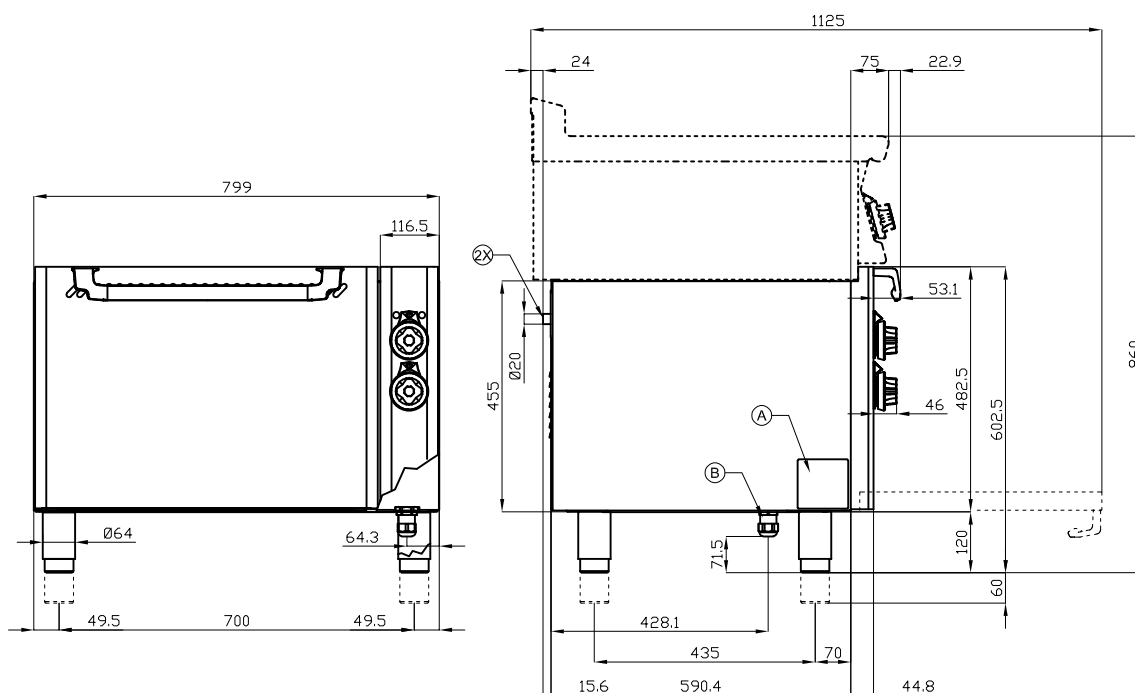


ITALIAN CULINARY ART

The pictures are purely representative. The manufacturer reserves the right to modify the technical data and models without previous notice.

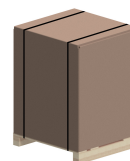
# MFV-78ET

70 SUPERLOTUS TOP  
STAND WITH ELECTRIC OVEN



A	Data plate		B	Electrical connection	
---	------------	--	---	-----------------------	--

MODEL: MFV-78ET  
DIMENSIONS: cm. 80x 63x 57h  
ELECTRIC POWER: 5,32 kW  
VOLTAGE: 400V~3N / 230V~3  
FREQUENCY: 50/60 Hz



kg: 55  
m<sup>3</sup>: 0.492  
mm: 830x770x770

BUY LOTUS BUY ITALY

The pictures are purely representative. The manufacturer reserves the right to modify the technical data and models without previous notice.



LOTUS S.P.A. Via Calmaor, 46  
31020 San Vendemiano(TV) - Italy  
Tel. + 39 0438 778020 / 778468  
Fax + 39 0438 778277  
www.lotuscookers.it - lotus@lotuscookers.it