

LAT-74

70 SUPERLOTUS TOP SINK UNIT - TOP

Sink unit - Lever type tap - Bowl cm.
30x35x15h (included 1 Head end filler strip
mod.TPA-7)



Construction - Fabricated using CrNi 18/10 AISI 304 grade Stainless Steel
Scotch-Brite Satin polish Finish, incorporating 2mm thick worktop,
rounded edges, chromed details and rear splash back. Model -
Professional Sink with Lever arm Tap for hygiene standards. Fittings -
Appliance is supplied with adjustable feet.

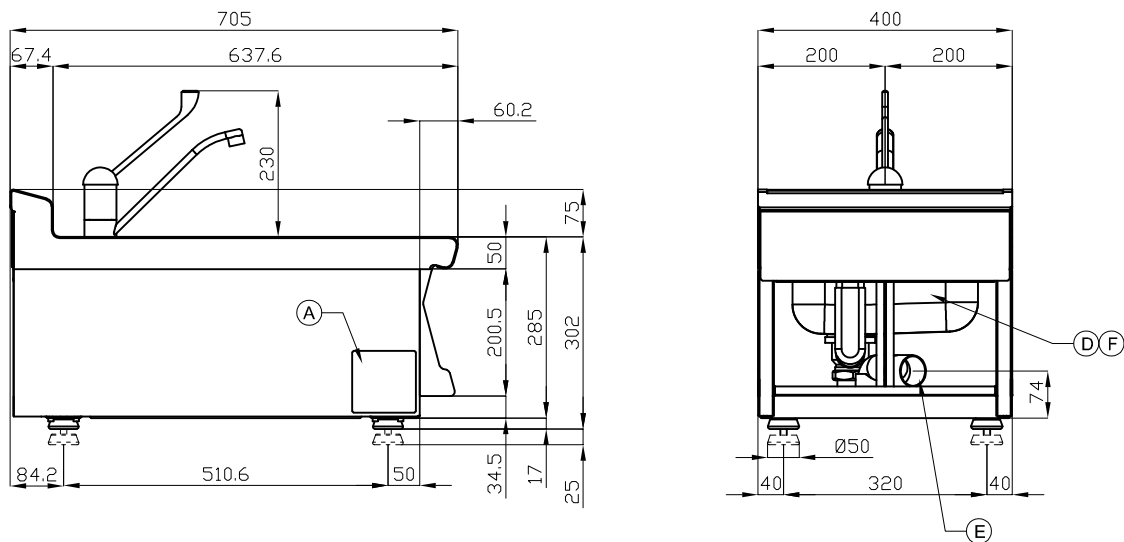


ITALIAN CULINARY ART

The pictures are purely representative. The manufacturer reserves the right to modify the technical data and models without previous notice.

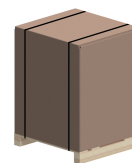
LAT-74

70 SUPERLOTUS TOP SINK UNIT - TOP



A	Data plate		D	Cold water connection	3/8" F
E	Water drainage	Ø50mm	F	Hot water connection	3/8" F

MODEL: LAT-74
DIMENSIONS: cm. 40x 70,5x 28h



kg: 22
m³: 0.179
mm: 430x770x540

BUY LOTUS BUY ITALY

The pictures are purely representative. The manufacturer reserves the right to modify the technical data and models without previous notice.



LOTUS S.P.A. Via Calmaor, 46
31020 San Vendemiano (TV) - Italy
Tel. + 39 0438 778020 / 778468
Fax + 39 0438 778277
www.lotuscookers.it - lotus@lotuscookers.it