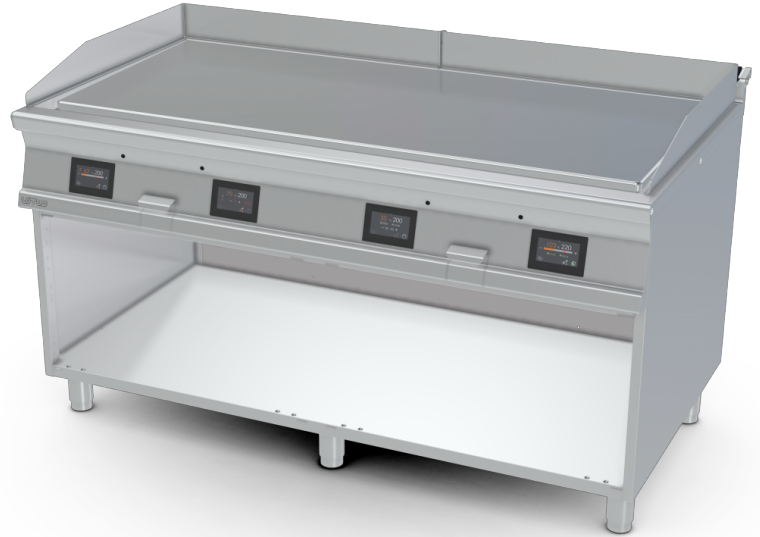


FTL-916ETTS

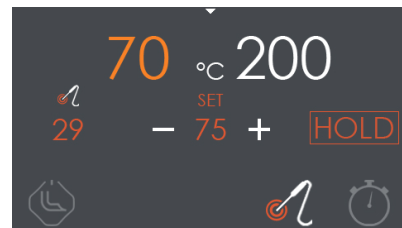
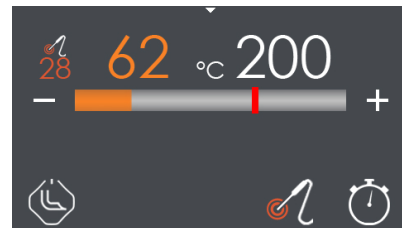
90 IPERLOTUS TOUCH ELECTRIC GRIDDLE - TOUCH



Electric Fry-top smooth chromed griddle SUPERCHROME (Moca Approved), on open cabinet, Touch Screen 4,3", temperature 300°C with PID control. "Energy Saving, WiFi and CLOUD". Functions: 2 timer, core probe for direct cooking (OPTIONAL). Plate cm.150,5x65 - 4 cooking areas (included 1 Head end filler strip mod.TPA-9)



Construction -Fabricated using CrNi 18/10 AISI 304 grade Stainless Steel Scotch-Brite Satin polish Finish, incorporating 2mm thick worktop, rounded edges, chromed details and rear splash back. Knobs with waterproof grades IPX5 and 4.3" capacitive touch screen. Model - Professional electric fry-top, smooth or grooved chromed griddle, FE510C s/s, on open cabinet. 20 mm thick chrome-molybdenum plate for FT-912/916 models. Display with thermostatic adjustment up to 300°C with PID algorithm for precise control of the set temperature; 2 timers maximum 99 minutes. With the OPTIONAL core probe it is possible to activate the menu for controlled core cooking. Equipped with safety thermostat. Standard WiFi and CLOUD, designed for connection to an external "ENERGY SAVING" system. Particularly quick and easy to clean. Large and removable liquid collection basins. Maintenance - All serviceable parts are accessible by the easy removal of front dashboard. Fittings - Appliance is supplied with adjustable feet. Doors not included.

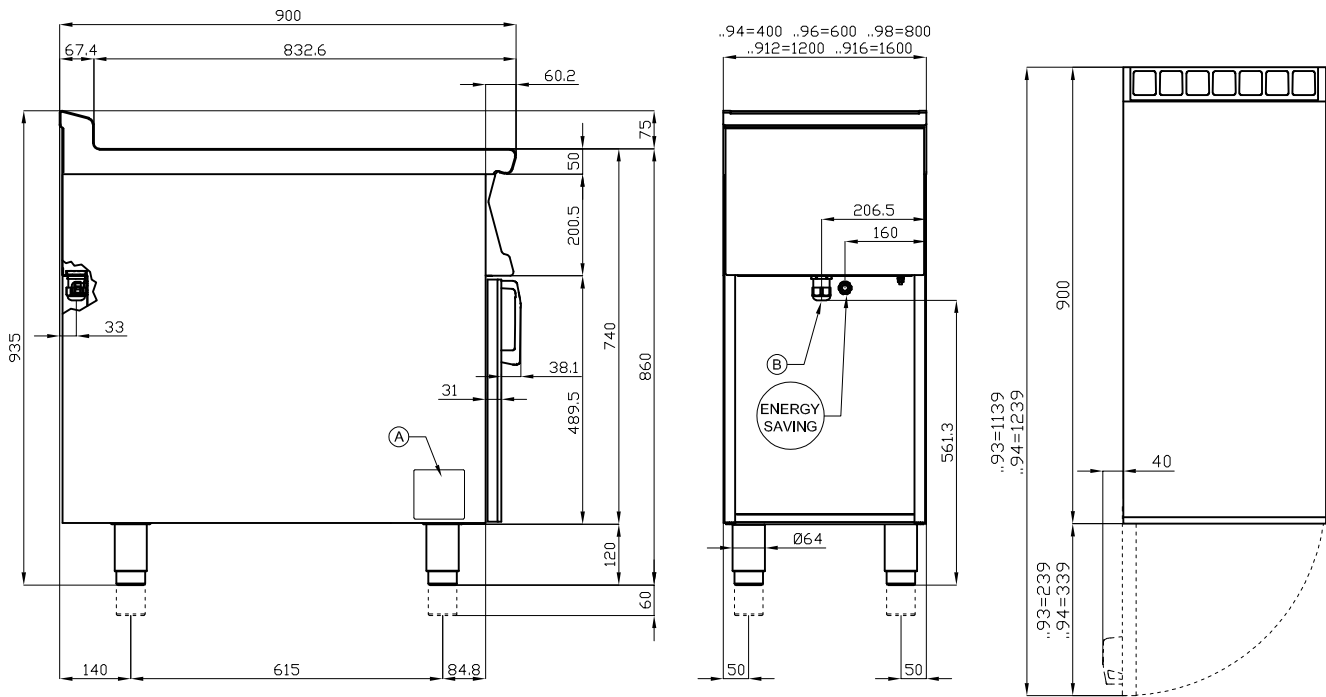


ITALIAN CULINARY ART

The pictures are purely representative. The manufacturer reserves the right to modify the technical data and models without previous notice.

FTL-916ETTS

90 IPERLOTUS TOUCH
ELECTRIC GRIDDLE - TOUCH



| | | | |
|---|------------|---|-----------------------|
| A | Data plate | B | Electrical connection |
|---|------------|---|-----------------------|

MODEL: FTL-916ETTS
 DIMENSIONS: cm. 160x 90x 90h
 ELECTRIC POWER: 30 kW
 VOLTAGE: 400V~3N
 FREQUENCY: 50/60 Hz



kg: 256
 m³: 1.755
 mm: 1630x970x1110

BUY LOTUS BUY ITALY

The pictures are purely representative. The manufacturer reserves the right to modify the technical data and models without previous notice.



LOTUS S.P.A. Via Calmaor, 46
 31020 San Vendemiano(TV) - Italy
 Tel. + 39 0438 778020 / 778468
 Fax + 39 0438 778277
 www.lotuscookers.it - lotus@lotuscookers.it