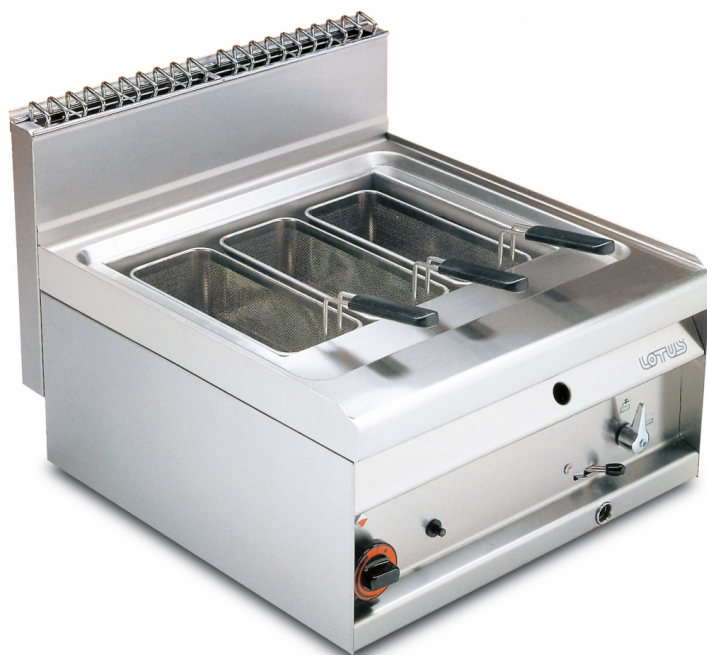


CP-6G

65 MAGICPROF GAS PASTA COOKERS

Gas pasta cooker - Tank capacity 27 lts.
46x35x25h N. 3 baskets cm. 14,5x29x11h
Water loading cock + overflow device



Construction - Fabricated using CrNi 18/10 AISI 304 grade Stainless Steel Scotch-Brite Satin polish Finish, incorporating 1mm thick worktop, rounded edges, chrome details and rear splash back. Tank fabricated in AISI 316. Model - Professional Gas Pasta Cooker with single tank incorporating built in and floor drain. Perforated pasta baskets with safety handles, for multiple product cooking. Water fill tap, front water drainage, overfill safety valve with back drainage. Piezoelectric ignition, pilot light. Thermocouple safety valves. Maintenance - All serviceable parts are accessible by the easy removal of front control panel. Fittings - Appliance is supplied with both LPG and Natural Gas conversion jets and adjustable feet.

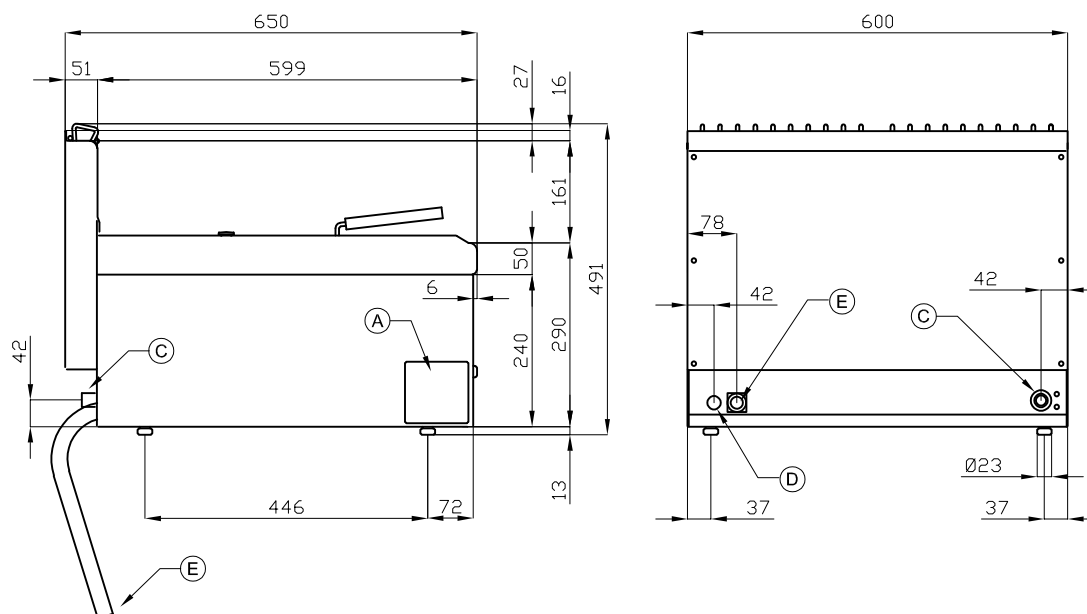


ITALIAN CULINARY ART

The pictures are purely representative. The manufacturer reserves the right to modify the technical data and models without previous notice.

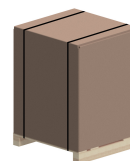
CP-6G

65 MAGICPROF GAS PASTA COOKERS



A	Data plate		C	Gas connection	ISO 7-1 1/2" M
D	Cold water connection	ISO 7-1 1/2" M	E	Water drainage	GOMMA Ø27e-19imm L=1300mm

MODEL: CP-6G
DIMENSIONS: cm. 60x 65x 29h
GAS POWER: 14 kW / 12.040 kcal/h
GAS TYPE: Natural Gas / LPG



kg: 47
m³: 0.265
mm: 630x690x610

BUY LOTUS BUY ITALY

The pictures are purely representative. The manufacturer reserves the right to modify the technical data and models without previous notice.



LOTUS S.P.A. Via Calmaor, 46
 31020 San Vendemiano(TV) - Italy
 Tel. + 39 0438 778020 / 778468
 Fax + 39 0438 778277
 www.lotuscookers.it - lotus@lotuscookers.it