

# CFQ4-118ET

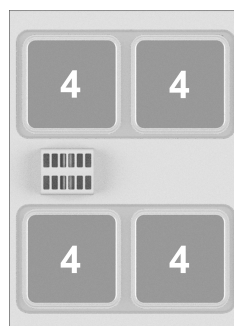
110 2WAYSLOTUS  
ELECTRIC COOKERS



Pass-through Electric range - N. 4 square plates on Pass-through Traditional electric oven cm. 55x98x34h, temp: 50÷300°C, with 1 grid cm.53x32,5 GN-1/1 and 1 cm.53x65 GN-2/1 (included 1 Head end filler strip mod.TPA-11)



**Construction** - Fabricated using CrNi 18/10 AISI 304 grade Stainless Steel Scotch-Brite Satin polish Finish, incorporating 2 mm thick worktop, rounded edges, chromed details. Knobs with waterproof grades IPX5.  
**Model** - Professional Electric Cooker with electric oven. Cast Iron square hot plates with steel border seals, seven position switch and temperature limiter. Pass-through electric static oven with double door, capacity GN-3/1, temperature setting 50-300 °C.  
**Maintenance** - All serviceable parts are accessible by the easy removal of front control panel.  
**Fittings** - Appliance is supplied with adjustable feet.



ITALIAN CULINARY ART

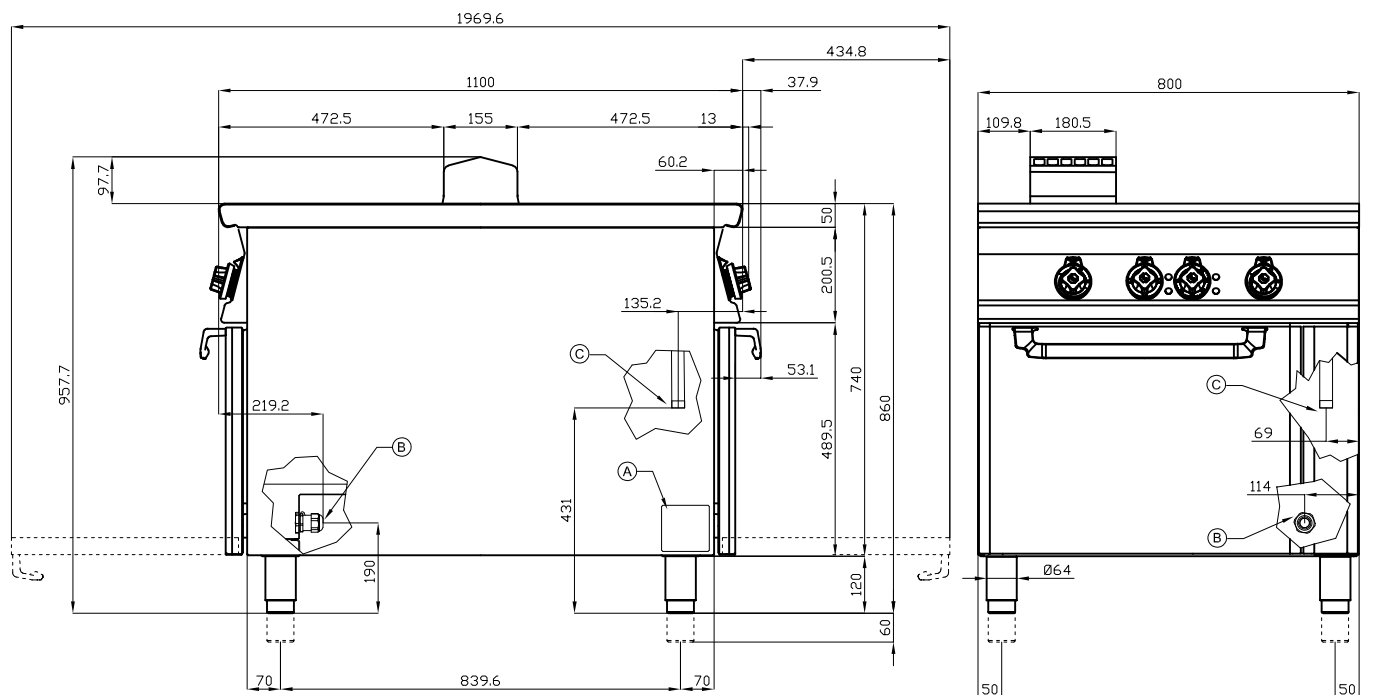
The pictures are purely representative. The manufacturer reserves the right to modify the technical data and models without previous notice.

# CFQ4-118ET

110 2WAYSLOTUS  
ELECTRIC COOKERS



View 3D



A	Data plate		B	Electrical connection	
---	------------	--	---	-----------------------	--

MODEL: CFQ4-118ET  
 DIMENSIONS: cm. 80x 110x 90h  
 ELECTRIC POWER: 23,5 kW  
 VOLTAGE: 400V~3N  
 FREQUENCY: 50/60 Hz



kg: 167  
 m<sup>3</sup>: 1.145  
 mm: 830x1210x1140

BUY LOTUS BUY ITALY

The pictures are purely representative. The manufacturer reserves the right to modify the technical data and models without previous notice.



LOTUS S.P.A. Via Calmaor, 46  
 31020 San Vendemiano(TV) - Italy  
 Tel. + 39 0438 778020 / 778468  
 Fax + 39 0438 778277  
 www.lotuscookers.it - lotus@lotuscookers.it