

CF4-118GE

110 2WAYSLOTUS

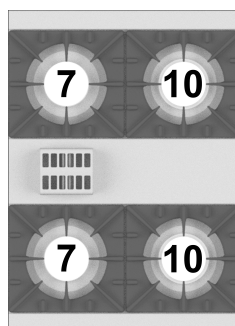
GAS COOKERS WITH ELECTRIC OVEN



Pass-through gas Range - N. 4 burners on
Pass-through traditional electric oven cm.
55x98x34h, temp: 50÷300°C, with 1 grid
cm.53x32,5 GN-1/1 and 1 cm.53x65 GN-2/1
(included 1 Head end filler strip mod.TPC-11)



Construction - Fabricated using CrNi 18/10 AISI 304 grade Stainless Steel Scotch-Brite Satin polish Finish, incorporating 2 mm thick worktop, rounded edges, chromed details. Knobs with waterproof grades IPX5. Model -Professional Gas Cooker with electric oven. Burners with pilot light ignition and thermocouple safety valves. Modulating flame burners, grills in cast iron or stainless steel rods, removable liquid collectors. Pass-through electric static oven with double door, capacity GN-3/1, temperature setting 50-300 °C. Maintenance - All serviceable parts are accessible by the easy removal of front control panel and liquid collectors. Fittings - Appliance is supplied with both LPG and Natural Gas conversion jets and adjustable feet.



ITALIAN CULINARY ART

The pictures are purely representative. The manufacturer reserves the right to modify the technical data and models without previous notice.

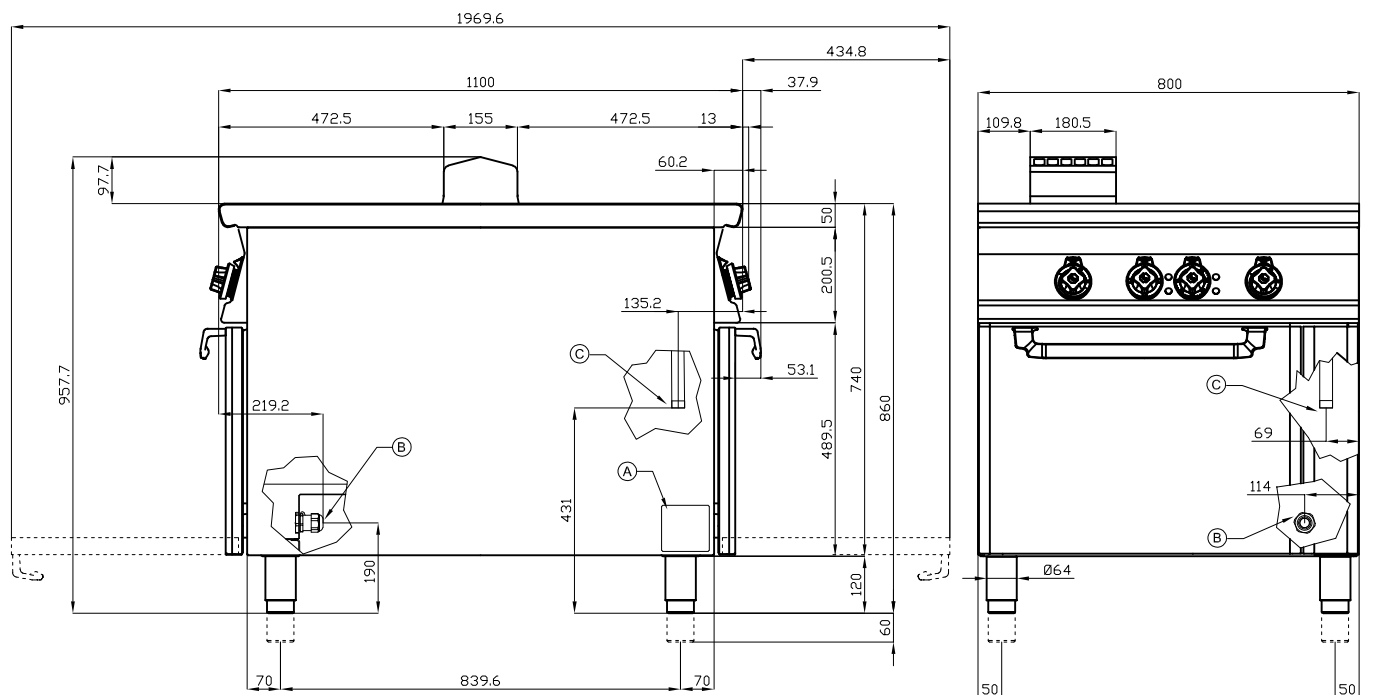
CF4-118GE

110 2WAYSLOTUS

GAS COOKERS WITH ELECTRIC OVEN



View 3D



A	Data plate		B	Electrical connection	
C	Gas connection	ISO 7-1 3/4" M			

MODEL: CF4-118GE
 DIMENSIONS: cm. 80x 110x 90h
 GAS POWER: 34 kW / 29.240 kcal/h
 GAS TYPE: Natural Gas / LPG
 ELECTRIC POWER: 7,5 kW
 VOLTAGE: 400V~3N
 FREQUENCY: 50/60 Hz



kg: 181
 m³: 1.145
 mm: 830x1210x1140

BUY LOTUS BUY ITALY

The pictures are purely representative. The manufacturer reserves the right to modify the technical data and models without previous notice.



LOTUS S.P.A. Via Calmaor, 46
 31020 San Vendemiano(TV) - Italy
 Tel. + 39 0438 778020 / 778468
 Fax + 39 0438 778277
 www.lotuscookers.it - lotus@lotuscookers.it