

# BRF-64G

## 60 MAGICLOTUS FIXED GAS BRATT PANS



Gas multi-function fixed braising pan - lt.12  
Bowl 30x42x10h



**Construction** - Fabricated using CrNi 18/10 AISI 304 grade Stainless Steel Scotch-Brite Satin polish Finish, incorporating 1mm thick worktop, rounded edges, chromed details and rear splash back. Knobs with waterproof grades IPX5. **Model** - Professional Gas Bratt Pan with 100mm deep fixed single tank with highly efficient conductive stainless steel base, thermostatically controlled up to 300deg C, removable liquid collector. Piezoelectric ignition, pilot light. Thermostatic control and thermocouple safety valves. **Maintenance** - All serviceable parts are accessible by the easy removal of front control panel. **Fittings** - Appliance is supplied with both LPG and Natural Gas conversion jets and adjustable feet.

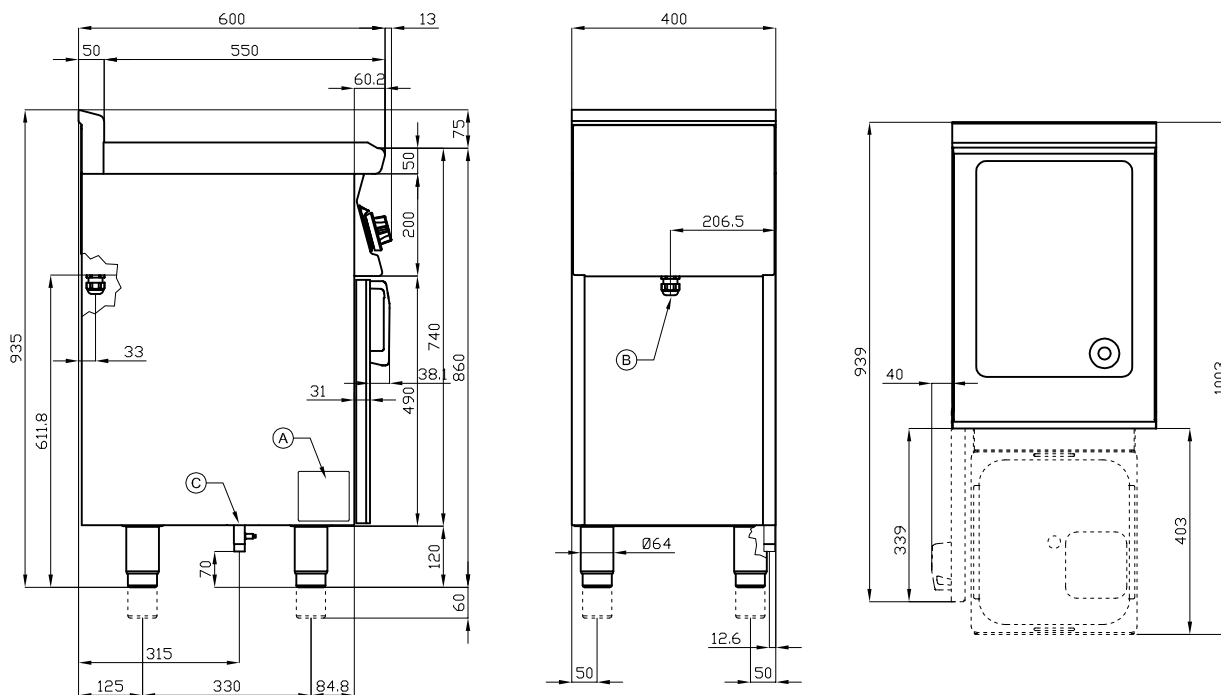


ITALIAN CULINARY ART

The pictures are purely representative. The manufacturer reserves the right to modify the technical data and models without previous notice.

# BRF-64G

60 MAGICLOTUS  
FIXED GAS BRATT PANS



A	Data plate	C	Gas connection	ISO 7-1 1/2" M
---	------------	---	----------------	----------------

MODEL: BRF-64G  
DIMENSIONS: cm. 40x 60x 90h  
GAS POWER: 6 kW / 5.160 kcal/h  
GAS TYPE: Natural Gas / LPG



kg: 75  
m<sup>3</sup>: 0.368  
mm: 430x770x1110

BUY LOTUS BUY ITALY

The pictures are purely representative. The manufacturer reserves the right to modify the technical data and models without previous notice.



LOTUS S.P.A. Via Calmaor, 46  
31020 San Vendemiano(TV) - Italy  
Tel. + 39 0438 778020 / 778468  
Fax + 39 0438 778277  
www.lotuscookers.it - lotus@lotuscookers.it