

# → 01P1V-2V

## CAPPA A PARETE COMPLETA DI FILTRI A LABIRINTO DA 1 O 2 ASPIRATORI WALL EXTRACTOR HOOD COMPLETE WITH LABYRINTH FILTERS AND 1 OR 2 EXTRACTOR FANS



Costruzione monoblocco in acciaio inox 18/10 AISI 304 con finitura Scotch-Brite®, motorventilatore 420 W 230 V incorporato, particolare profilo che la rende ideale per blocchi di cottura 60-70-90 cm posizionati a parete anche nei casi di soffitti bassi. Scarico 3/4".

Esecuzioni speciali a richiesta.

In dotazione:

→ Filtri a labirinto H 500 mm in AISI 304.

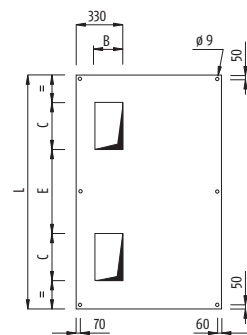
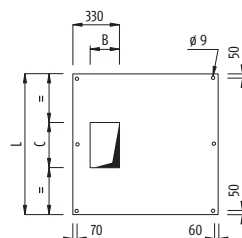
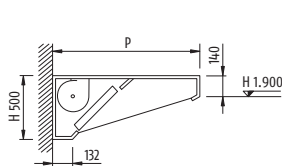
Monobloc construction in stainless steel 18/10 AISI 304 with Scotch-Brite® finishing, motorfan 420 W 220 V incorporated, the particular profile makes it ideal for cooking elements of 60-70-90 cm located at the exact opposite also by low ceiling.

Dumping 3/4".

Special works on request.

Equipped with:

→ Labyrinth filters H 500 mm AISI 304.



→ H 500

Codice/Code	P x L mm	Filtri/Filters n	Fori/Holes n	B mm	C mm	E mm	Motori/Motors n	Potenza/Power W
H01P1V0712	700 x 1.200	2	-	210	230	-	1	300
H01P1V0716	700 x 1.600	3	-	210	230	-	1	300
H01P1V0720	700 x 2.000	4	-	260	300	-	1	420
H01P1V0724	700 x 2.400	4	-	260	300	-	1	420
H01P1V0728	700 x 2.800	5	-	260	300	-	1	420
H01P2V0728	700 x 2.800	5	2	260	300	1.310	2	420
H01P2V0732	700 x 3.200	6	2	260	300	1.710	2	420
H01P2V0736	700 x 3.600	6	2	260	300	2.110	2	420
H01P2V0740	700 x 4.000	7	2	260	300	2.510	2	420
H01P1V0912	900 x 1.200	2	-	210	230	-	1	300
H01P1V0916	900 x 1.600	3	-	210	230	-	1	300
H01P1V0920	900 x 2.000	4	-	260	300	-	1	420
H01P1V0924	900 x 2.400	4	-	260	300	-	1	420
H01P1V0928	900 x 2.800	5	-	260	300	-	1	420
H01P2V0928	900 x 2.800	5	2	260	300	1.310	2	420
H01P2V0932	900 x 3.200	6	2	260	300	1.710	2	420
H01P2V0936	900 x 3.600	6	2	260	300	2.110	2	420
H01P2V0940	900 x 4.000	7	2	260	300	2.510	2	420
H01P1V1112	1.100 x 1.200	2	-	210	230	-	1	300
H01P1V1116	1.100 x 1.600	3	-	210	230	-	1	300
H01P1V1120	1.100 x 2.000	4	-	260	300	-	1	420
H01P1V1124	1.100 x 2.400	4	-	260	300	-	1	420
H01P1V1128	1.100 x 2.800	5	-	260	300	-	1	420
H01P2V1128	1.100 x 2.800	5	2	260	300	1.310	2	420
H01P2V1132	1.100 x 3.200	6	2	260	300	1.710	2	420
H01P2V1136	1.100 x 3.600	6	2	260	300	2.110	2	420
H01P2V1140	1.100 x 4.000	7	2	260	300	2.510	2	420